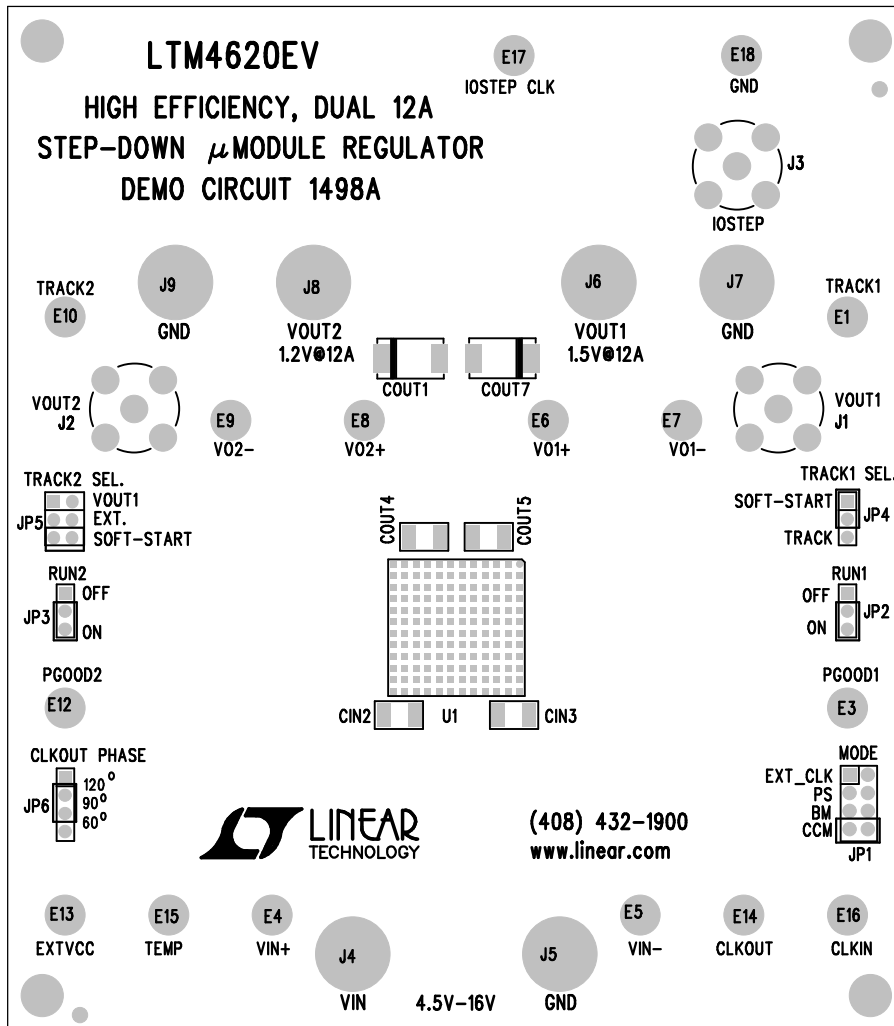
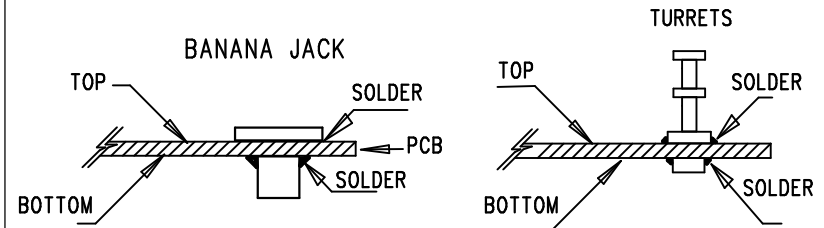
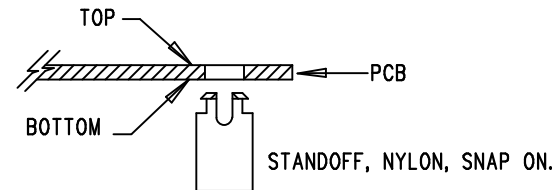


REVISION HISTORY				
ECO	REV	DESCRIPTION	APP. ENG.	DATE
-	2	PRODUCTION	JEFF Z.	09-08-10


NOTES: UNLESS OTHERWISE SPECIFIED

1. WORKMANSHIP SHALL BE IN ACCORDANCE WITH IPC-A-610.
2. ASSEMBLY PROCESS SHALL INCLUDE: REFLOW SOLDER TOP SIDE SMD.
MAXIMUM SOLDER TEMPERATURE IS 240 DEG C.
3. PARTS TO OMIT WILL BE SPECIFIED ON THE BILL OF MATERIALS.
LOCATIONS OF OMITTED PARTS SHALL BE FREE OF SOLDER.
MASK THE SOLDER STENCIL WHERE SMT PARTS ARE OMITTED.
4. INSTALL SHUNTS AS SHOWN ON ASSY DRAWING.
5. DEPANELIZE BOARDS AFTER ASSEMBLY AND ROUTE-OUT THE
BREAKOUT TABS ON FOUR SIDES OF THE BOARD EDGE.
6. DO NOT APPLY ANY KIND OF ASSEMBLY STAMP OR QA STAMP
TO ANY BOARD.
7. INSTALL 4 STANDOFFS, BANANA JACK, TURRETS.



TOP SILKSCREEN
 LINEAR TECHNOLOGY
 DC1498A-2 - LTM4620EV
 HIGH EFFICIENCY, DUAL 12A
 STEP-DOWN μ MODULE REGULATOR
 DATE: 09-08-10

APPROVALS

PCB DES.	AK	 1630 MCCARTHY BLVD MILPITAS, CA 95035 PH: (408)432-1900 www.linear.com LTC CONFIDENTIAL- FOR CUSTOMER USE ONLY	
APP ENG.	JEFF Z.		
		TITLE: TOP ASSEMBLY DRAWING HIGH EFFICIENCY, DUAL 12A STEP-DOWN μ MODULE REGULATOR	
		SIZE	IC NO. LTM4620EV
		N/A	DEMO CIRCUIT 1498A
SCALE = NONE	FILENAME: DC1498A-2.PCB		REV. 2
			SHT 1 OF 2